

They use place value understanding and properties of operations to add and subtract (Standards 2.NBT.5–9).

Standard 2.NBT.8 Mentally add 10 or 100 to a given number 100-900, and mentally subtract 10 or 100 from a given number 100-900.

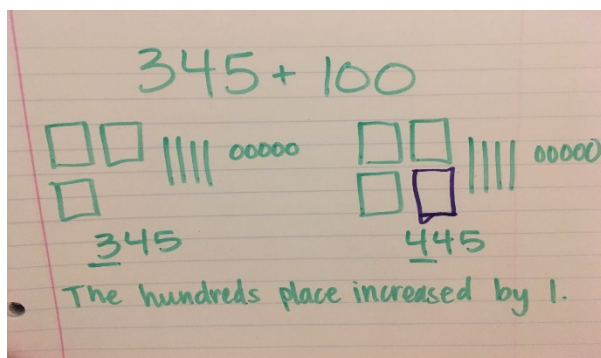
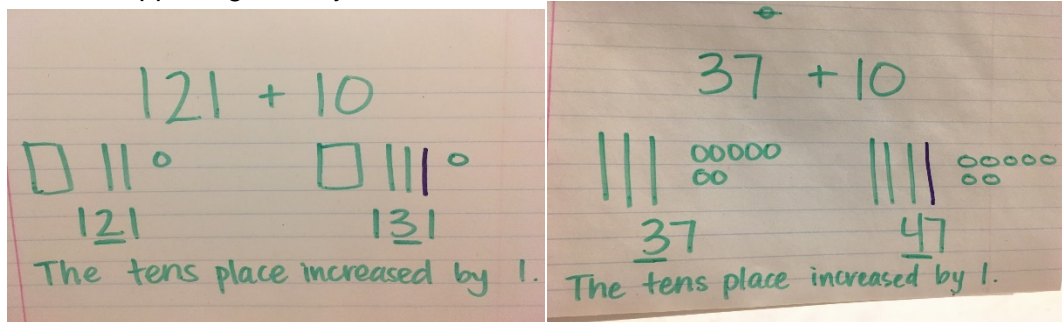
Please Note: First grade students mentally add and subtract 10 or 100 to a given number (see 1.NBT.5).

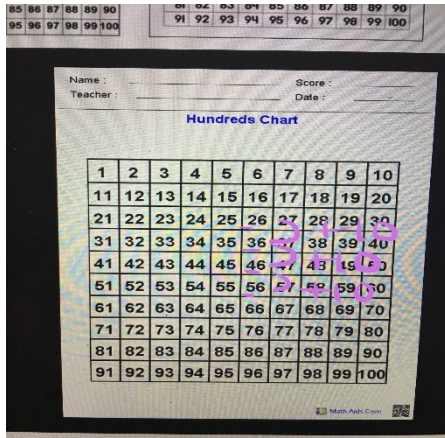
Key Elements:

Start with a visual representation to build understanding and establish patterns. Once students have been given opportunities to develop a deep understanding of adding/subtracting 10 or 100 to any given number, they will be able to move into the mental math stage.

- Base Ten Blocks/Drawings

- Recording the original number and the original number plus ten will help students see what is happening visually and within the numbers.





- Hundreds charts

- These are great tools that help establish a pattern when moving vertically (counting by 10s)